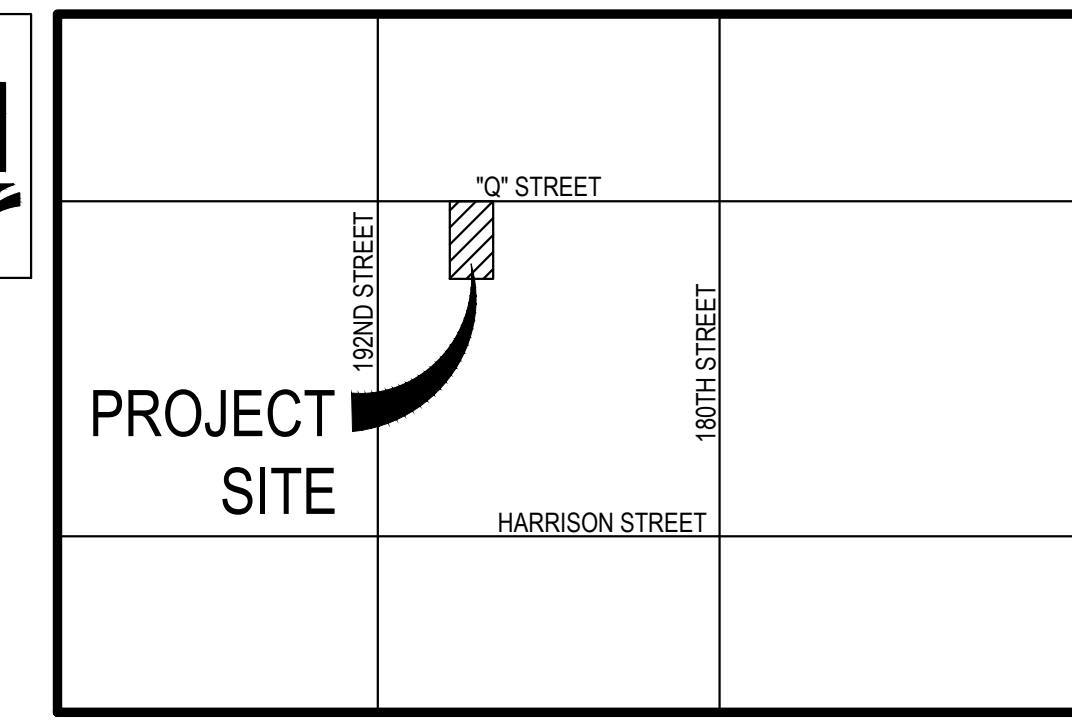
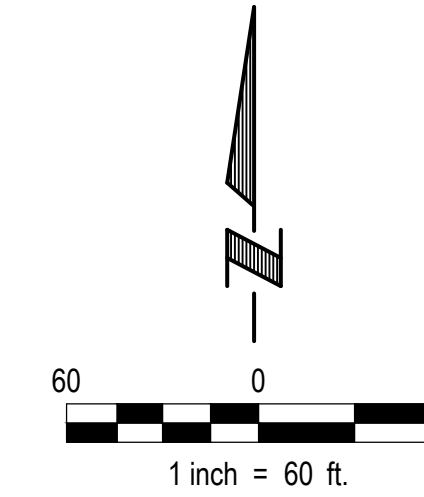


Improvement Plans for
COYOTE RUN
 2024 PARK IMPROVEMENTS - SPORTS COURTS
 SID NO. 456
 Douglas County, Nebraska

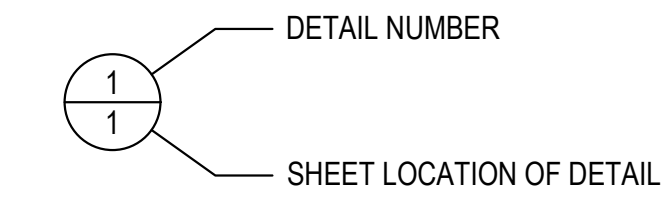


VICINITY MAP



INDEX OF SHEETS

SHEET No.	DESCRIPTION
1.	COVER SHEET
2.	REMOVALS PLAN
3.	DIMENSION & AMENITY PLAN
4.	LANDSCAPE PLAN
5.	CONSTRUCTION DETAILS



APPROXIMATE QUANTITIES

ITEM	DESCRIPTION	QUANTITY	UNIT
1.	BASKETBALL & PICKLEBALL/TENNIS COURT STRIPING AND PAINT	1	LS
2.	BASKETBALL OUTFIT (POST, BACKBOARD, RIM & NET)	2	EA
3.	GOAL POST FOOTING & INSTALLATION W/ 4 TIE BARS	2	EA
4.	6' PARK BENCH	4	EA
5.	TRASH RECEPTACLE W/ 2' x 2' CONCRETE PAD	1	LS
6.	8' TALL STANDARD BLACK CHAIN LINK DIVIDER FENCE - SURFACE MOUNT POSTS	94	LF
7.	INSTALL "PRIVACYLINK" 10' VINYL BLACK SLATS (3 1/2" x 5" MESH)	235	LF
8.	PARK TREE	19	EA
9.	SEED ALL DISTURBED AREAS - TYPE A	0.25	AC
10.	MAT ALL DISTURBED AREAS - NORTH AMERICAN GREEN	1,210	SY
11.	REMOVE EXISTING TENNIS COURT STRIPING	1	LS
12.	REMOVE & DISPOSE EXISTING TENNIS COURT NET	1	LS
13.	FULL DEPTH SAW CUT & REMOVE EXISTING CONCRETE (BASKETBALL GOAL POSTS)	32	SF
14.	REMOVE & REPLACE 6" P.C.C. EXISTING TRAIL (AS NEEDED)	120	SF
15.	INSTALL CONSTRUCTION ENTRANCE	1	LS



GENERAL NOTES

- All work shall be performed in accordance with the City of Omaha Standard Specifications for Public Works Construction, 2020 Edition, and any current revisions or amendments thereto. The City of Omaha Parks Department standards and the Special Provisions for this project shall apply, and the Contractor shall perform in accord therewith.
- The Contractor shall be responsible to construct a completed park as shown on these plans to include the approximate quantities. All park equipment shall be assembled according to the manufacturers approximate quantities recommendations.
- It is the intent of these plans to permit the Contractor to supply any of the materials or equipment specified or offer an equivalent. The Engineer shall determine whether the material or equivalent offered is equivalent to that specified. Whenever any particular material or equipment is indicated by patent, proprietary or brand name, or by name of manufacturer, such wording is used for the purposes of facilitating its description and shall be deemed to be followed by the word "or equal". The Contractor may offer any material or equipment which he considers to be equivalent to that indicated.
- References to "Standard Plates" refers to the City of Omaha's 2020 Standard Plate list. These Standard Plates can be found at: <https://publicworks.cityofomaha.org/2018-standard-plate-list>
- Item # 15. Install Construction Entrance. This item is intended to pay the Contractor for the installation, maintenance and removal of the construction entrance prior to seeding.
- All colors shall be specified by the Engineer.
- Contractor must have one person on staff and on site at all times during construction that is a current Certified Playground Safety Inspector. (CPSI)
- Contractor must provide a minimum of 5 projects in the past 5 years of similar scope and size of project.

GRADING NOTES

- Topographic survey is by E&A Consulting Group, Omaha, NE (402) 895-4700. Contour interval is 2 foot
- The Contractor shall take care to locate and protect existing utilities from damage caused by construction activities. Any damage which occurs to existing utilities is the responsibility of the Contractor and shall be repaired at the Contractors expense.
- All dimensions and elevations marked with an asterisk (*) shall be field verified prior to construction. Notify the Engineer of any conflicts with the drawings prior to construction.
- Grading shall be accomplished in accordance with Section 200 "Earthwork" of the Omaha Standard Specifications.
- Proposed contours and spot elevations are controls only and site shall be graded to a tolerance of +0.1 foot. All grading shall be smooth and continuous. All surfaces shall have positive drainage
- Provide positive drainage at all times within the construction area and do not allow water to pond in excavation areas or next to structures. Maintain all existing drainage patterns except as modified by the plans.
- Take the necessary measures to prevent soil erosion during the construction process. This shall include the erection and maintenance of silt fencing at location indicated on the plans or required in the field to prevent soil loss or waterway pollution. Maintain silt fence and remove sediment as required. Remove silt fence only after establishment of new turf crop.
- Clear and grub all vegetation for areas to be graded. Separate organic material from associated topsoil and legally dispose of organic material off site.
- Maximum longitudinal sidewalk grade shall be 5% (20:1) unless indicated otherwise on the drawings. Notify the Engineer of any inability to achieve this maximum slope. Maximum cross shall be 2%. Where longitudinal slopes exceeds 3% maximum, cross slope shall be 1%.

LANDSCAPE NOTES:

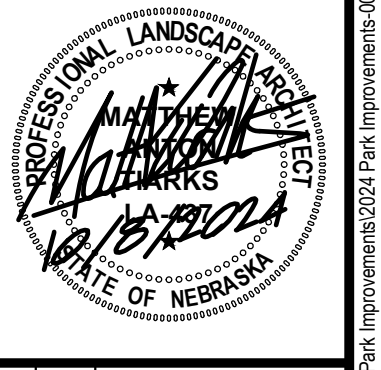
- Locate and verify the location of all underground utilities prior to the start of any construction. Care should be taken not to disturb any existing utilities during construction. Any damage to utilities or other improvements caused by the Contractor will be repaired at no cost to the Owner.
- All plant material shall be of good quality and sizes shall meet required size specifications.
- All plants are to be watered in immediately after planting and then watered once a week for a period of two months from time of planting.
- All plant material shall be guaranteed to be in a live and healthy growing condition for two full growing seasons (two years) after final project acceptance or shall be replaced free of charge with the same grade and species including labor.
- Verify all dimensions and conditions prior to starting construction. The location of plant material is critical and shall be installed as indicated on plans. Field adjustments may be necessary based on field conditions (i.e., root ball and drop inlet conflict). All adjustments must be approved by the landscape architect and engineer.
- The Landscape Contractor shall remove all construction debris and materials injurious to plant growth from planting pits and beds prior to backfilling with planting mix. All planting areas shall be free of weeds and debris prior to any work.
- Provide locally produced shredded hardwood mulch on all trees and in all planting beds to a 3-4 inch minimum depth. Mulch ring to extend 1'-0" minimum beyond planting pit.
- All trees are to be staked for a period of not less than one year from time of planting.

E & A CONSULTING GROUP, INC.
 Engineering • Planning • Environmental & Field Services
 10809 Mill Valley Road, Suite 100 • Omaha, NE 68154
 Phone: 402.895.4700 • Fax: 402.895.3999
 www.eaeg.com
 State of NE Certificate of Authorization #C-00008



COYOTE RUN
 2024 PARK IMPROVEMENTS - SPORTS COURTS
 SID NO. 456
 DOUGLAS COUNTY, NEBRASKA

COVER SHEET

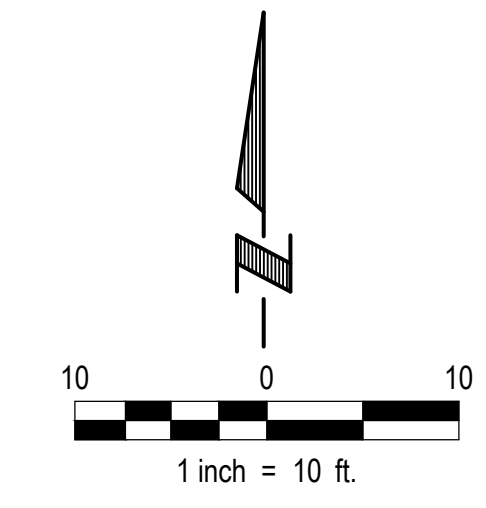



Revisions	Date	Description

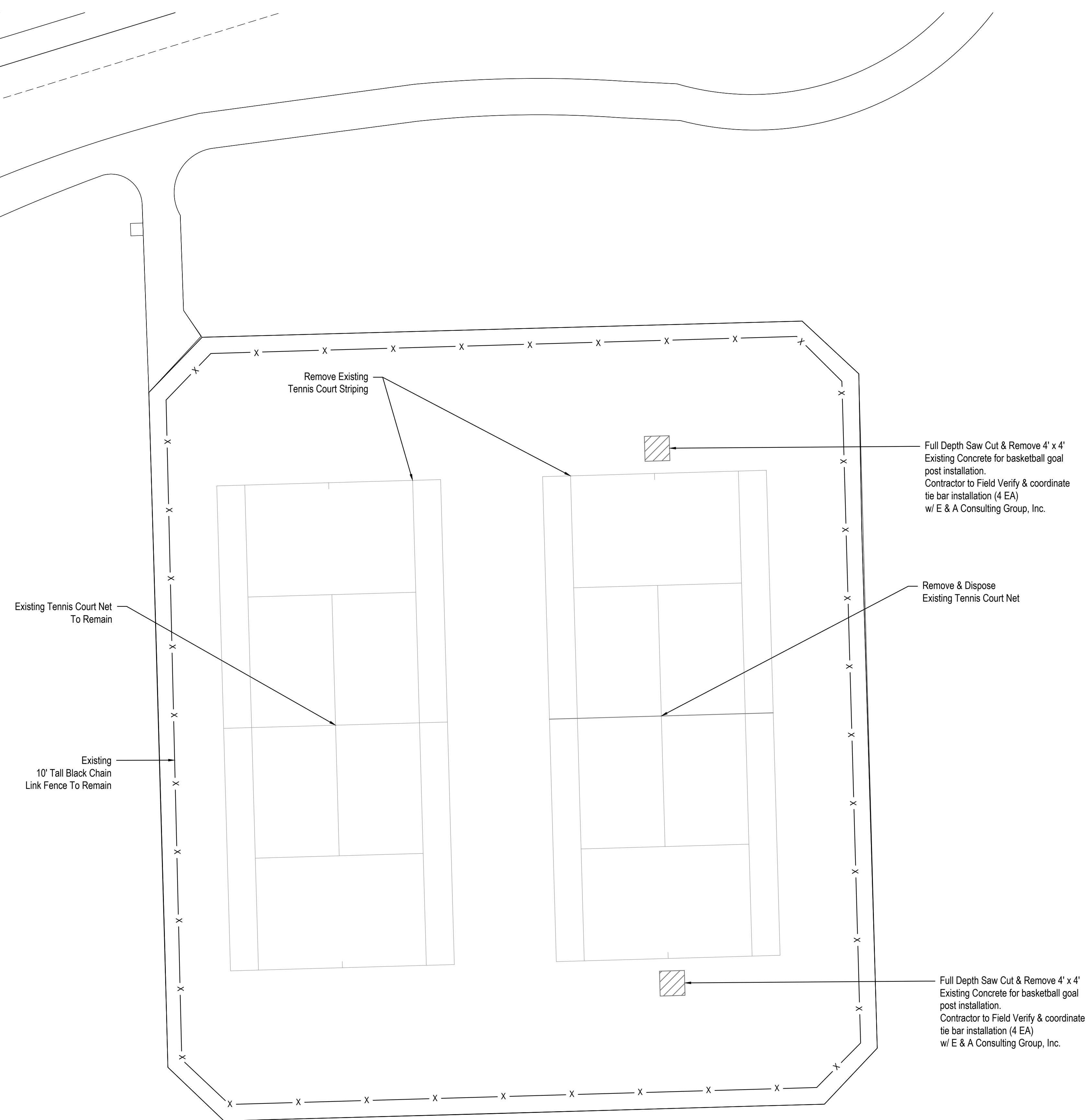
Proj No:	P1995-07-089
Date:	10/08/2024
Designed By:	MAT
Drawn By:	MAT
Scale:	AS SHOWN
Sheet:	1 of 5

Matthew Tanks

K:\Projects\1995-07-089\District Maintenance\2024 Park Improvements\200.dwg 10/7/2024 1:18 PM



LEGEND
 Removals



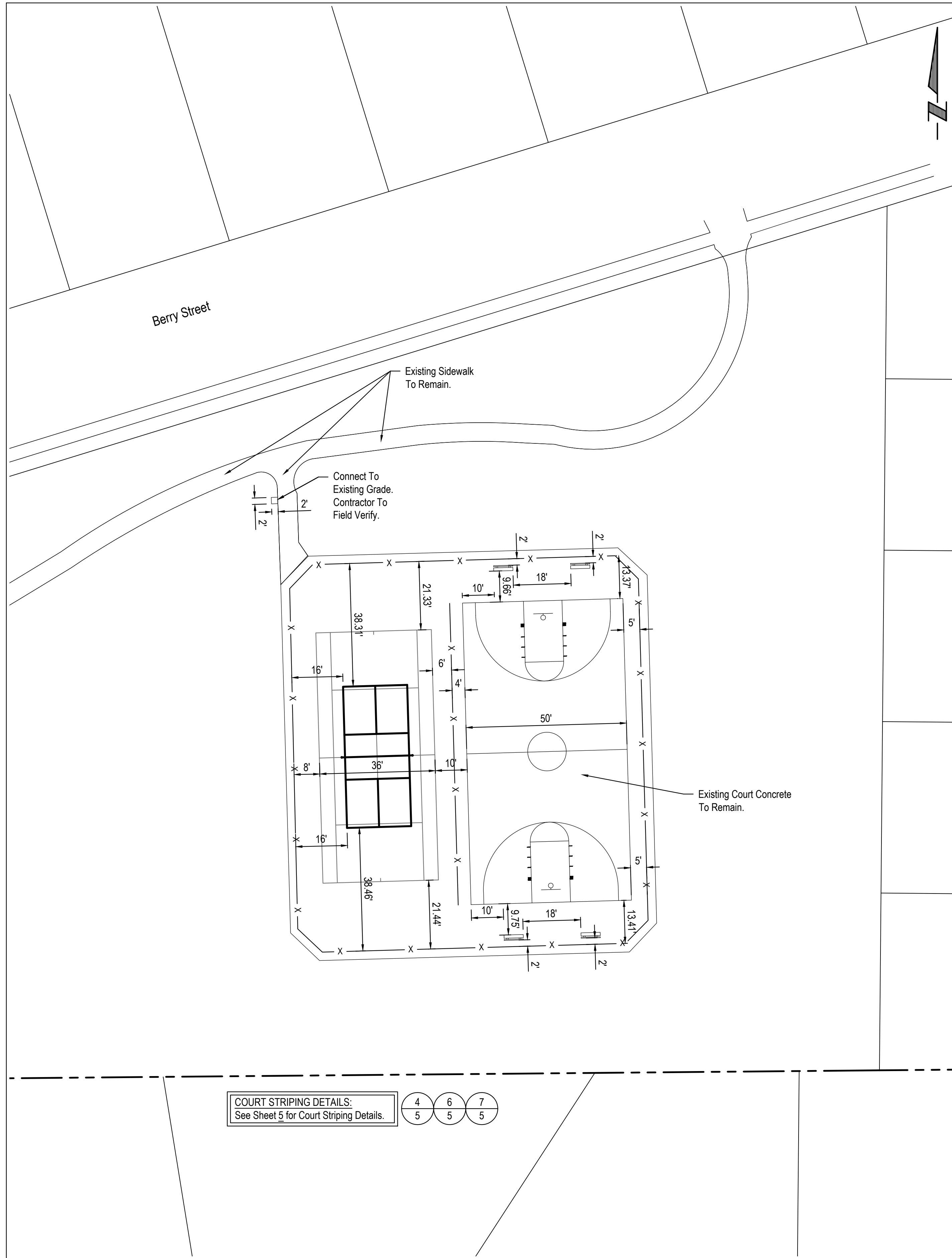
 E & A CONSULTING GROUP, INC. Engineering • Planning • Environmental & Field Services 10808 Mill Valley Road, Suite 100 • Omaha, NE 68154 Phone: 402.895.4700 • Fax: 402.895.3999 www.eaeg.com State of NE Certificate of Authorization #C-00008							
COYOTE RUN 2024 PARK IMPROVEMENTS - SPORTS COURTS S/D 456 DOUGLAS COUNTY, NEBRASKA							
REMOVALS PLAN							
							
Proj No: P1959.07.049 Date: 10/08/2024 Designed By: MAT Drawn By: MAT Scale: AS SHOWN Sheet: 2 of 5	<table border="1" style="width: 100%; border-collapse: collapse;"> <thead> <tr> <th style="width: 10%;">Date</th> <th style="width: 10%;">By</th> <th style="width: 80%;">Description</th> </tr> </thead> <tbody> <tr> <td> </td> <td> </td> <td> </td> </tr> </tbody> </table>	Date	By	Description			
Date	By	Description					

Matthew Tanks 10/7/2024 1:18 PM C:\Projects\1959\2024-Park-Improvements\2024-Park-Improvements-200.dwg



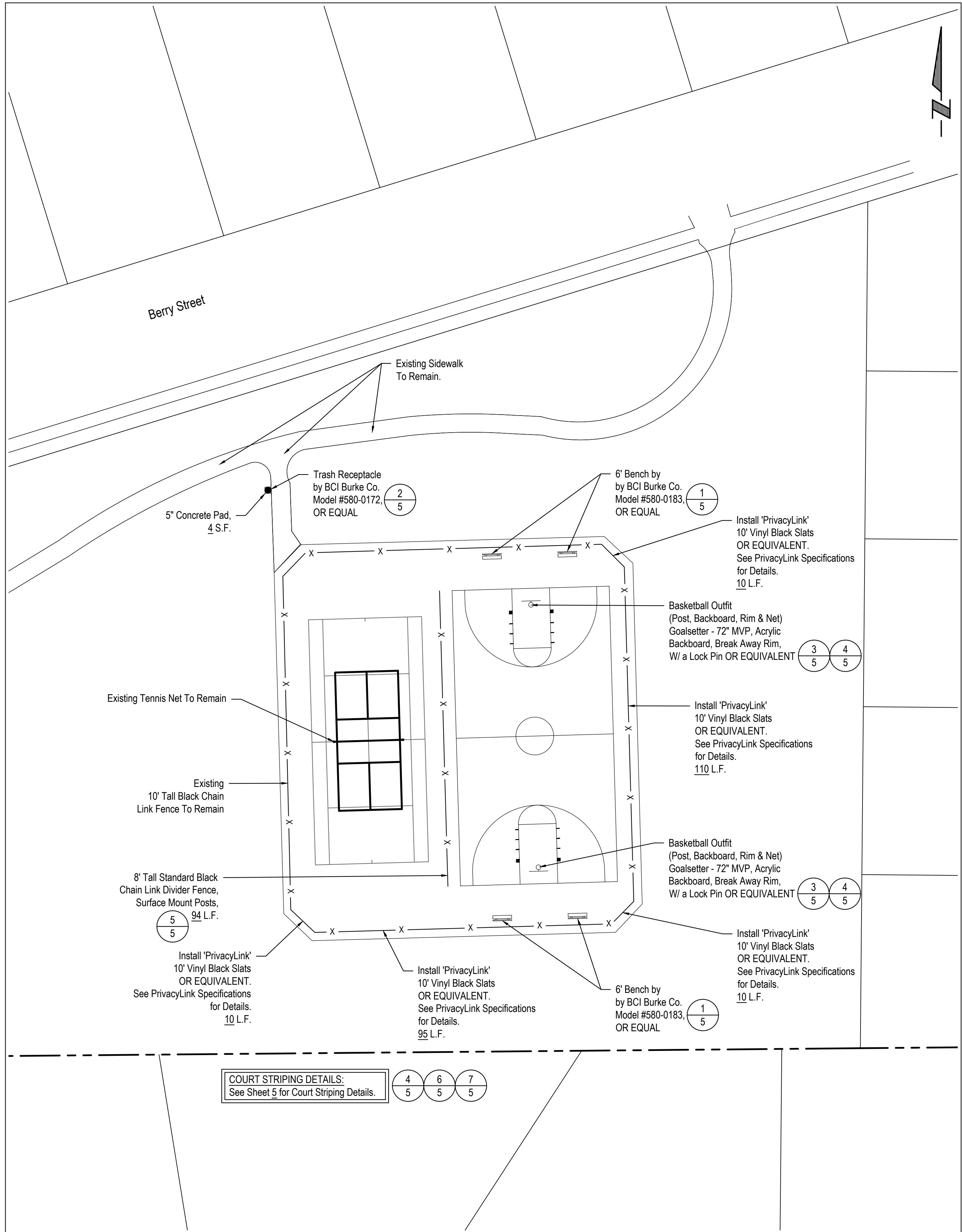
Revisors	Description	Date

Proj No:	P1995.07.089
Date:	10/08/2024
Designed By:	MAT
Drawn By:	MAT
Scale:	AS SHOWN
Sheet:	3 of 5



COURT STRIPING DETAILS:
 See Sheet 5 for Court Striping Details.

DIMENSION PLAN
 SCALE: 1" = 20'



COURT STRIPING DETAILS:
 See Sheet 5 for Court Striping Details.

AMENITY PLAN
 SCALE: 1" = 20'

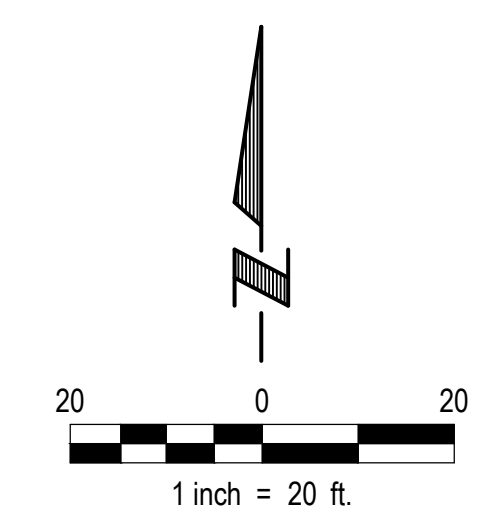


LANDSCAPE NOTES:

1. Locate and verify the location of all underground utilities prior to the start of any construction. Care should be taken not to disturb any existing utilities during construction. Any damage to utilities or other improvements caused by the Contractor will be repaired at no cost to the Owner.
2. All plant material shall be of good quality and sizes shall meet required size specifications.
3. All plant material are to be watered in immediately after planting and then watered once a week for a period of two months from time of planting.
4. All plant material shall be guaranteed to be in a live and healthy growing condition for two full growing seasons (trees) after final project acceptance or shall be replaced free of charge with the same size and species including labor.
5. Verify all dimensions and conditions prior to starting construction. The location of plant material is critical and shall be installed as indicated on plans. Field adjustments may be necessary based on field conditions (i.e., root ball and drop inlet conflict). All adjustments must be approved by the landscape architect.
6. The Landscape Contractor shall remove all construction debris and materials injurious to plant growth from planting pits and beds prior to backfilling with planting mix. All planting areas shall be free of weeds and debris prior to any work.
7. Provide locally available shredded hardwood mulch on all trees and in all planting beds to a 4 inch maximum depth unless otherwise noted. Mulch ring to extend 1'-0" minimum beyond planting pit. Minor site grading to be included if needed.
8. All trees are to be staked for a period of not less than one year from time of planting. Contractor shall remove all staking after one year.
9. Contractor to coordinate work with other amenities contractors.

SEEDING NOTES:

1. Seed all disturbed areas.
2. Seed to be installed per City of Omaha Parks, Recreation, and Public Property Dept. specifications (32_92_00).
3. Matting/erosion control blanket shall be composed of a single net straw blanket of a layer of 100% straw fiber stitched with biodegradable thread to a biodegradable natural fiber top net. Matting/erosion control blanket shall be "BioNet S75BN" as manufactured by North American Green, 14649 Highway 41 North, Evansville, Indiana, 47711, phone number: (812) 867-6632 or (800) 772-2040; fax number (812) 867-0247; website: www.nagreen.com or Approved Equivalent..
4. Contractor to coordinate work with other amenities contractors.



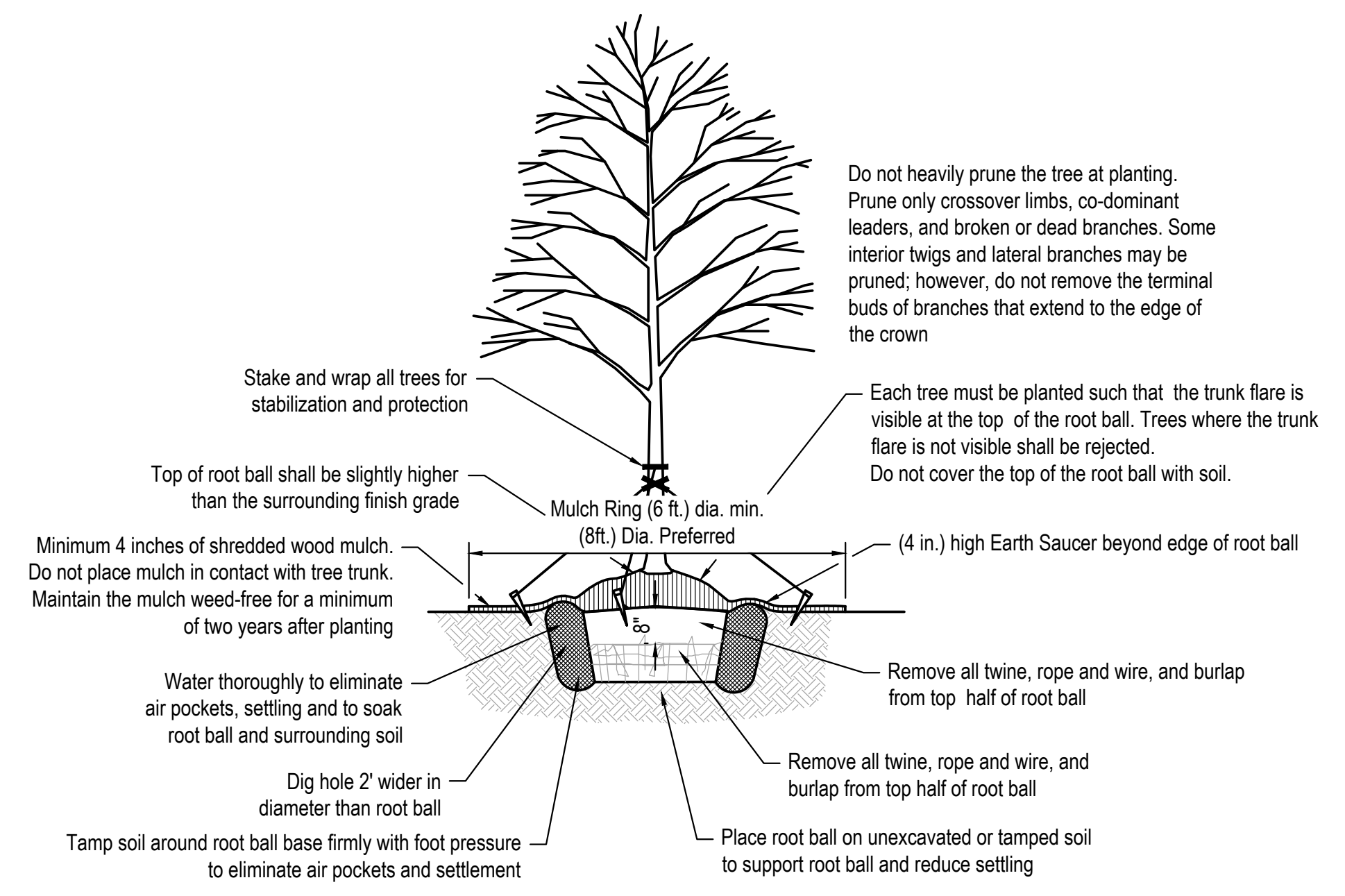
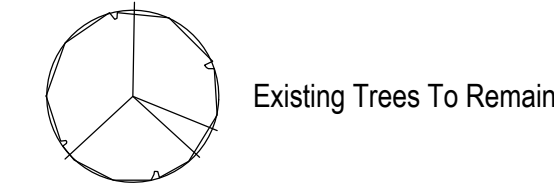
PLANT SCHEDULE

SYM	QTY	BOTANICAL NAME	COMMON NAME	SIZE	TYPE
A	12	<i>Picea pungens</i>	Colorado Blue Spruce	7'-8'	B&B
B	10	<i>Picea glauca</i> 'Densata'	Black Hills Spruce	7'-8'	B&B

TREE NOTES:

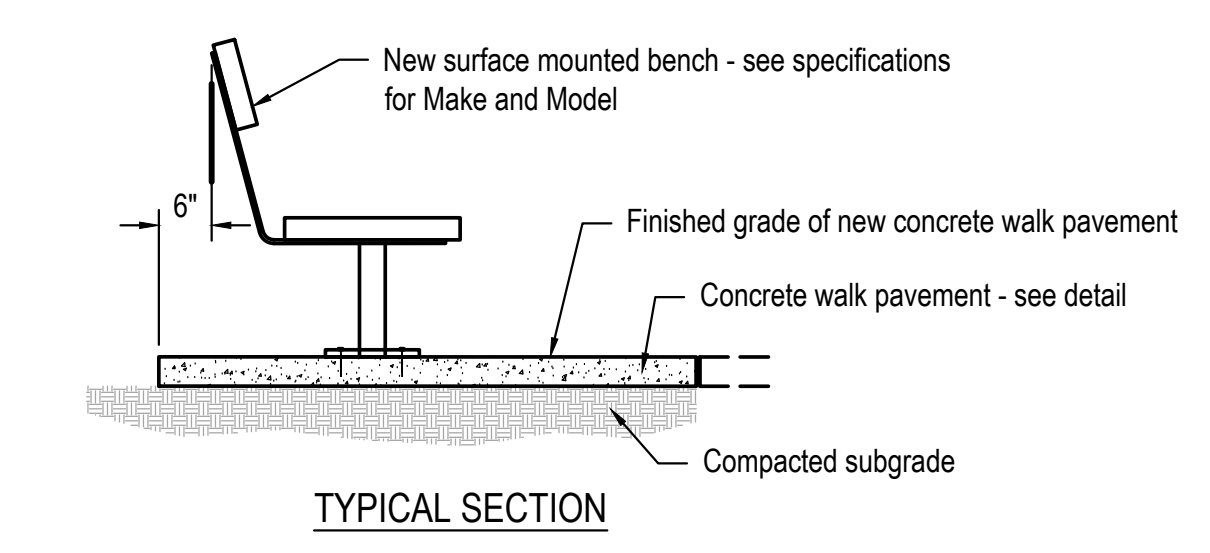
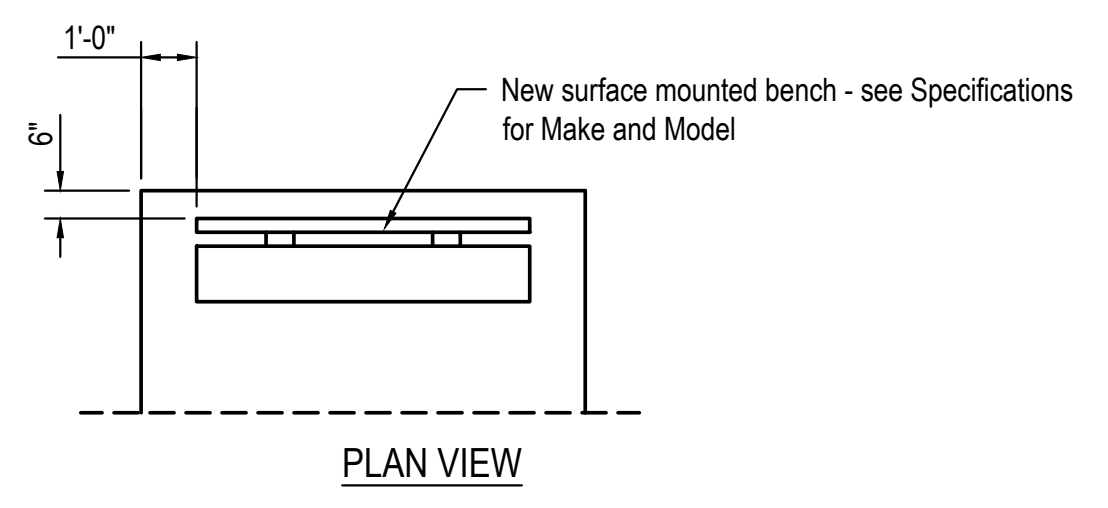
1. Landscape contractor must coordinate with all utilities and general contractor to field verify all utility locations that may conflict with all proposed tree planting locations on the project site.

LEGEND:

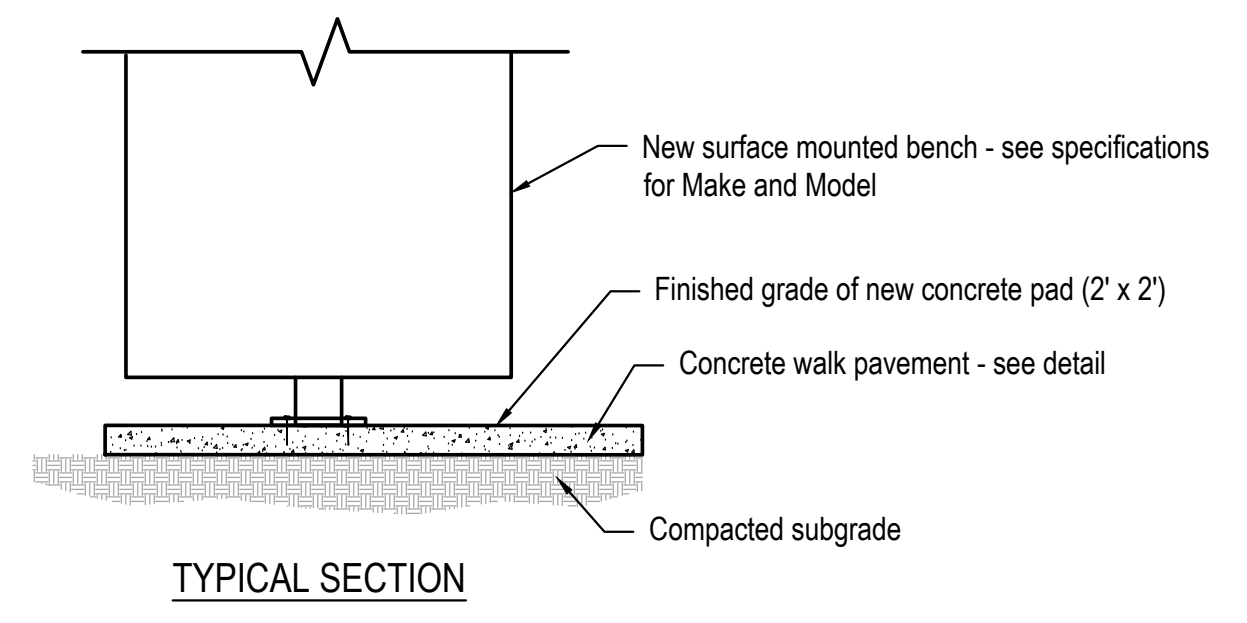


TREE PLANTING DETAIL - B & B TREE

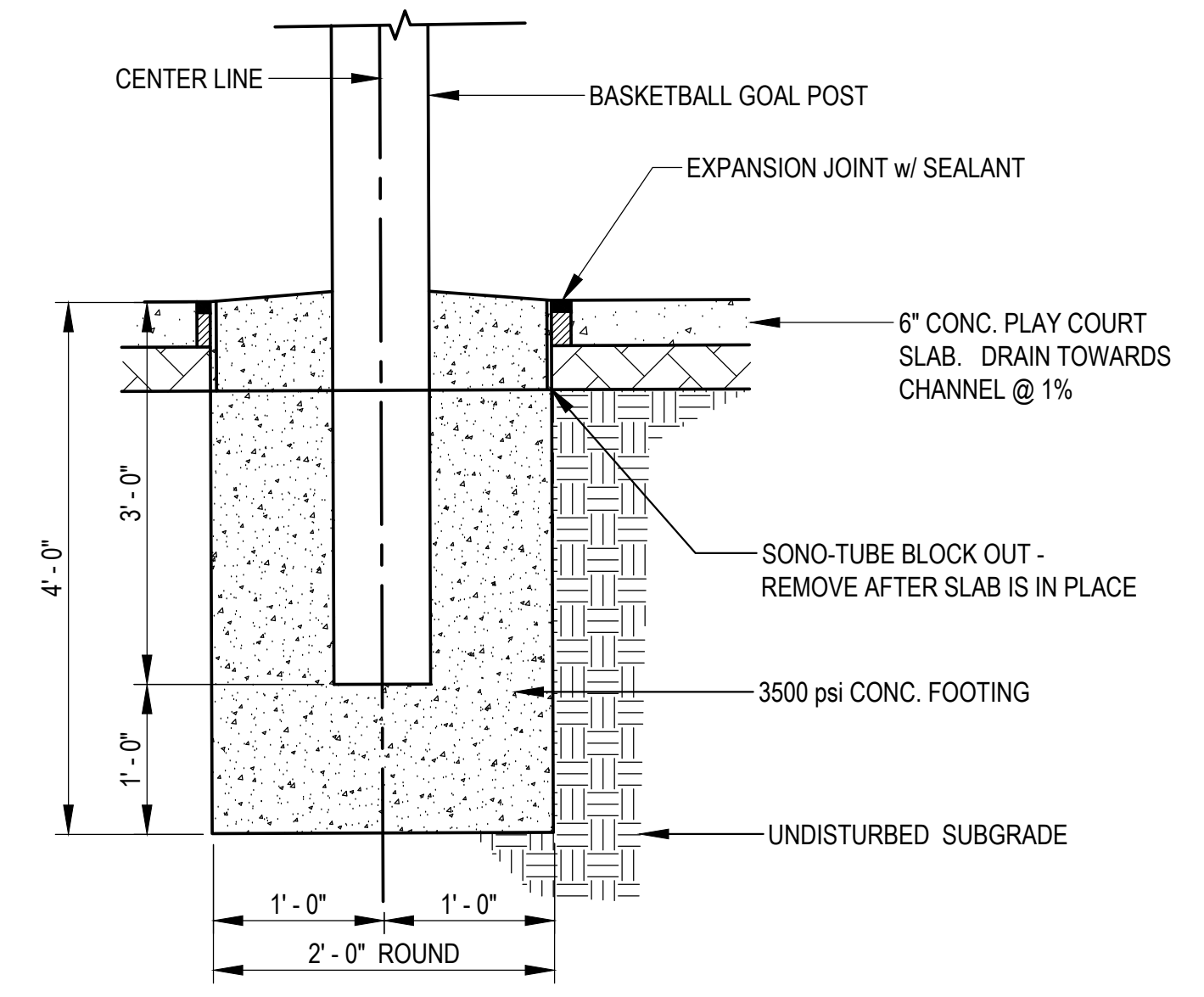
NOT TO SCALE



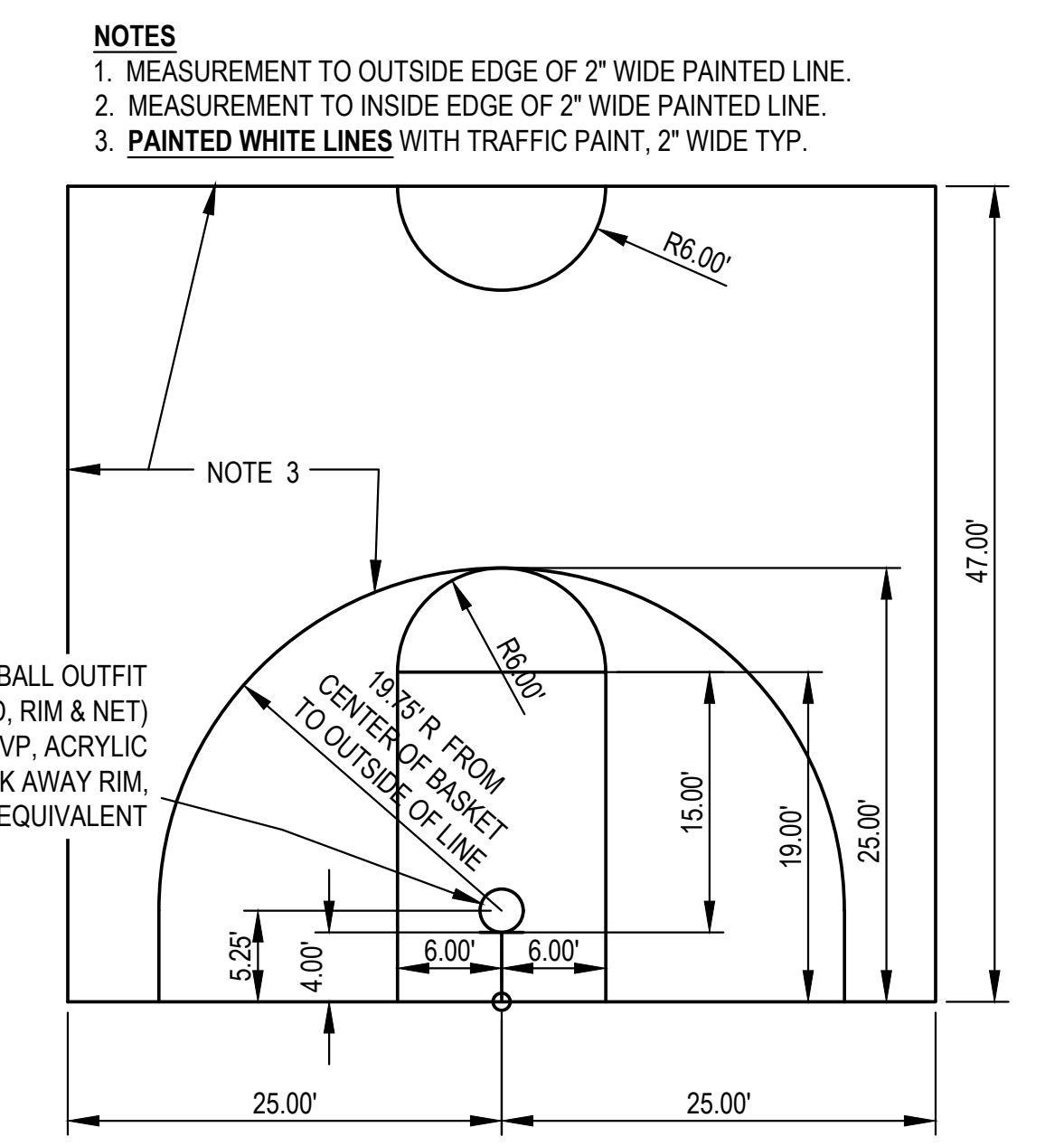
1
5
BENCH - SURFACE MOUNTED
 NOT TO SCALE



2
5
TRASH RECEPTACLE - SURFACE MOUNTED
 NOT TO SCALE



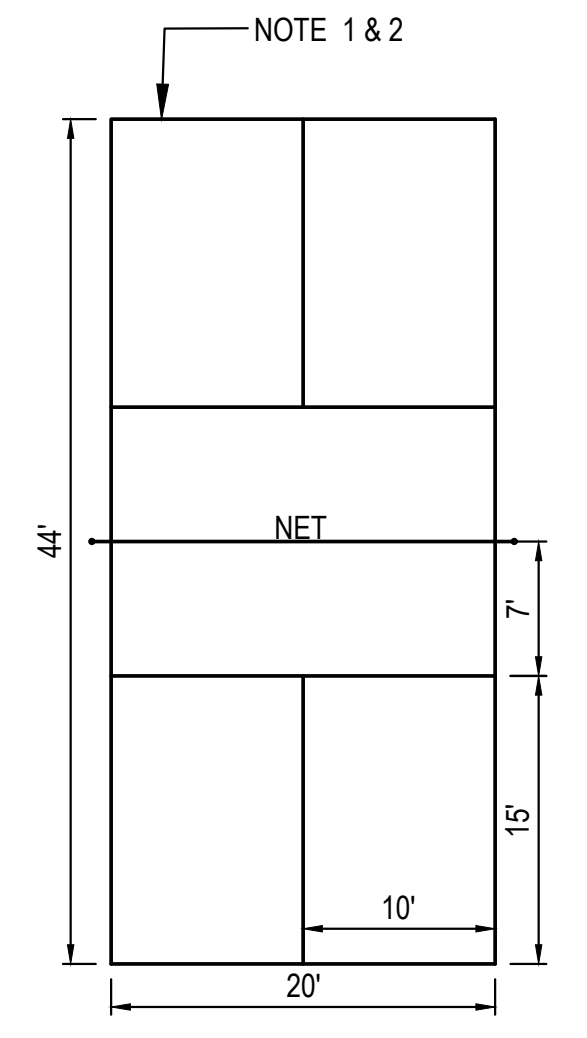
3
5
BASKETBALL COURT GOAL POST
 NOT TO SCALE
 INCLUDE 4 TIE BARS PER GOAL POST



4
5
BASKETBALL HALF COURT STRIPING PLAN
 NOT TO SCALE

COURT NOTES

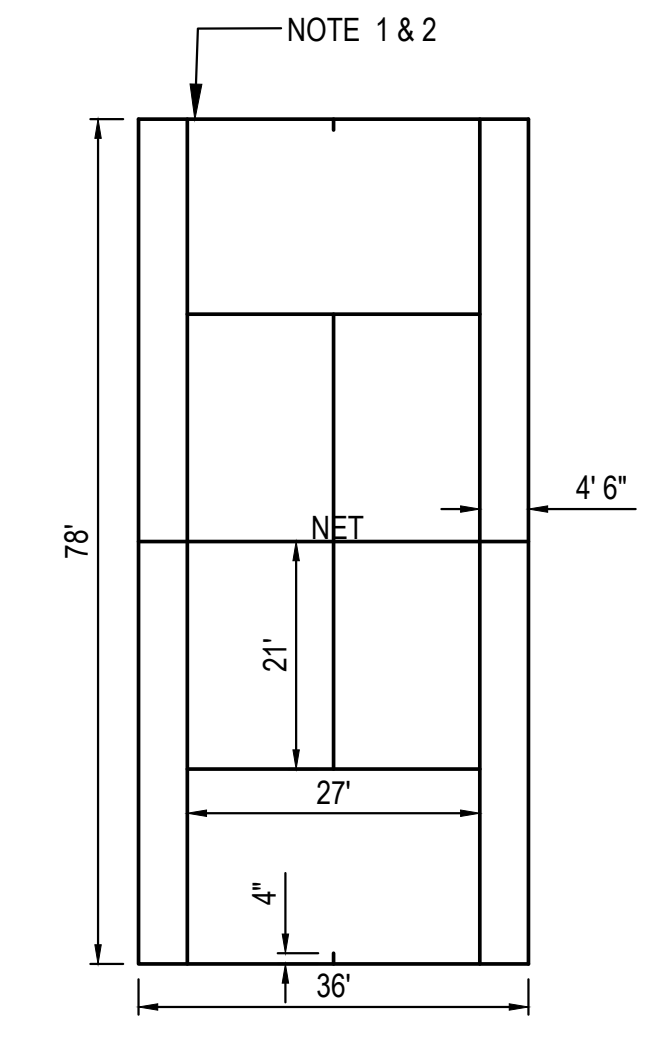
- MEASUREMENT TO CENTER OF 2" WIDE PAINTED LINE.
- PAINTED YELLOW LINES WITH TRAFFIC PAINT, 2" WIDE TYP.



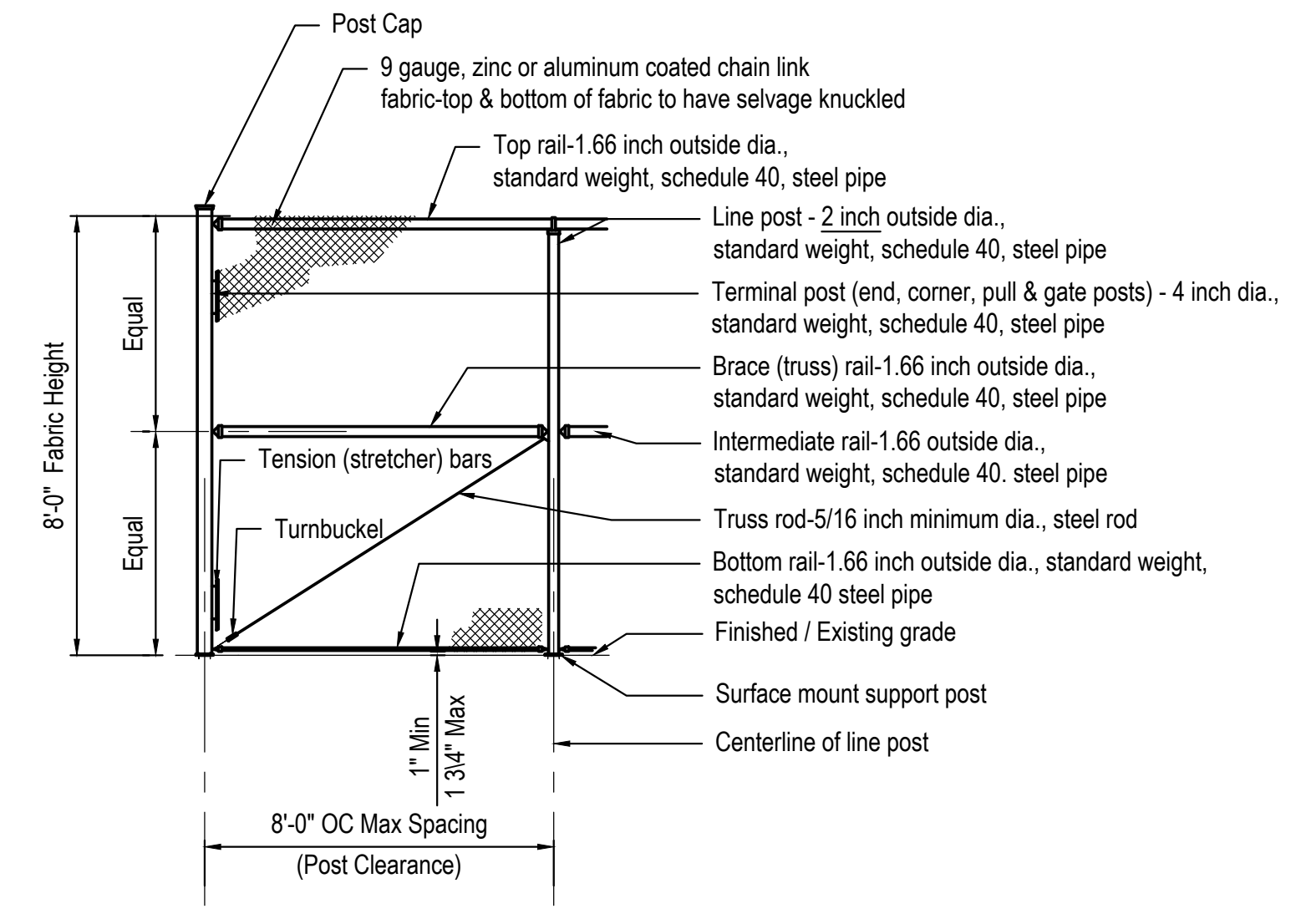
6
5
PICKLEBALL COURT STRIPING PLAN
 NOT TO SCALE

COURT NOTES

- MEASUREMENT TO CENTER OF 2" WIDE PAINTED LINE.
- PAINTED WHITE LINES WITH TRAFFIC PAINT, 2" WIDE TYP.



7
5
TENNIS COURT STRIPING PLAN
 NOT TO SCALE



8
5
8 FOOT TALL CHAIN LINK FENCING - SURFACE MOUNT
 SCALE: NOT TO SCALE